

## MAHARASHTRA UNIVERSITY OF HEALTH SCIENCES, NASHIK

## Physiotherapy Faculty

## INFRASTRUCTURE DETAILS OF COLLEGE AND HOSPITAL

Sr. No.	Particulars to be verified	Actual Available	Lacuna
<b>College</b>			
1	<b>Land details</b> (as per M.S.R.): Total land (Not less than 2 acres), (Owned or leased land), unitary or not, NA of all land, 7/12 extracts of all land, Constructed Area Details: <b>44293.50</b> Sq.ft./Sq.mtr. (Applicable only to Private Colleges). (Verify land documents & Government permissions documents are uploaded on College Website.) (No Land/ Construction documents shall be submitted to the University. Only deficit information to be pointed out to the University).	<b>44293.50</b> <b>Sq. Feet</b>	
2	Dean office, Professor's Office, Associate Professor's Office, Assistant Professor's Office, Administrative Block as per M.S.R..	<b>5190.14</b> <b>Sq. Feet</b>	
3	<b>All DEPARTMENTS</b> (as per M.S.R.): Human Anatomy, Human Physiology, Electrotherapy & Electrodiagnosis, Kinesiotherapy & Physical Diagnosis, Musculoskeletal Physiotherapy, Neuro Physiotherapy, Cardiovascular & Respiratory Physiotherapy, Community Physiotherapy	<b>Available</b>	
4	<b>College Library</b> (as per M.S.R.): Area (1200 Sq.Ft.), Reading Rooms for Students, Staff Reading Room, Room for Books & Journals, Rooms for Librarian and Other Staff; Journal Room, Number of Computers with internet facility with minimum 15 nodes, Photocopier Machine, Total No. of books, Number of Journals: (Titles only), (Multiple volumes / issues of one title should be counted as ONE).  No. of books added in last year: <b>41</b> No. of Journals titles added in last year: <b>05</b> [Bills shall be verified by the Committee.]	<b>2038.12</b> <b>Sq. Feet</b>	
	Digital Library / e – Library availability	<b>Available</b>	
	MUHS Digital Library Availed	<b>Available</b>	
5	<b>Details of all Lecture Theatres with Seating Capacity</b> (as per M.S.R.) along with AV Aids including overhead projector, LCD Projector and a microphone / multi Podium system. There shall be provision for E-class. Lecture halls must have facilities for conversion into E-class/Virtual class for teaching.	<b>Available</b>	
6	<b>Conference Room for Faculty:</b> (as per M.S.R.)	<b>500 Sq. Feet</b>	
7	<b>Mini Auditorium: (15 Sq. Ft./Student)</b> (as per M.S.R.)	<b>3180.5 sq. Ft</b>	
8	<b>Class Rooms: (15 Sq. Ft./ Student)</b> (as per M.S.R.)	<b>6056.62 Sq. Ft</b>	
9	<b>Core Laboratories:</b> (as per M.S.R.) <b>Exercise Physiology &amp; Fitness :</b> Computerized Treadmill, Bicycle ergometer with speedometer, Skin fold caliper, Body composition analyzer, Weighing scale with height measurement, Spirometer, Peak flow meter, Energy Consumption analyzer, Pulse Oxymeter, ECG, Fitter, Inspiratory Muscle Trainer, Oxygen Cylinder, Nebulizer (ultrasonic), Nebulizer (Jet), Portable Suction Machine, B.P. Apparatus & Stethoscope, Shuttle Walk Test Software (Desirable).	<b>1556.62</b> <b>Sq. Feet</b>	
10	<b>Physiotherapy Museum</b> (as per M.S.R.) (Desirable)	<b>500 Sq. Ft</b>	
11	<b>Yoga / Clinical Skill Laboratory:</b> (as per M.S.R.) Yoga Mats / Pediatric Mats / Mats for Training Neurotherapeutic Skills, Adjustable Manual Therapy Plinth, Therabands & Theratubes, Swiss balls, Stability Trainers, Sensory Assessment Kit, Balance Assessment & Training Equipment, Stools, Benches, Wheel Chairs, Stairs, Ramps For Training Transfers.	<b>1500</b> <b>Sq. Ft</b>	
12	<b>University Examination Infrastructure:</b> Strong Room for examination a) (Area- 1200 sq.ft, b) Shelf, c) Steel cupboard – 1, d) CCTV, Photocopier Machine, Examination hall with benches, Parking Facility for University vehicle, Guest house facility	<b>Available</b>	
13	<b>Residential quarter facility for staff:</b> Teaching, Non-teaching, Paramedical & Nursing staff	<b>—</b>	<b>—</b>

14	<b>Other facilities:</b> Hospital Waste Management Unit, Research Cell, Intercom Network, Playground, P.T Teacher or Instructor, Common Rooms for Boys, Common Room for Girls, Cafeteria, Facility for indoor games, Gymnasium / Gymkhana Facility,.	Available	
15	<b>Hostel Facility:</b> Boys (UG), Girls (UG), Interns, Canteen Facility, Warden/ Rector, Hygiene, etc. [Note: Verify Canteen Facility is monitored as per MUHS Circular No.18/2019 dated 19/03/2019.]	Available	
<ul style="list-style-type: none"> <li>As per Central Council Norms/ University Norms, above Infrastructure must be available at College and all information with photographs must be uploaded on College Website.</li> <li>If Infrastructure is available, then mark "Adequate" &amp; do not attach any documents.</li> <li>In case of "Inadequate", it must be marked as "Inadequate" with documentary evidence.</li> </ul>			

HOSPITAL			
16	<b>Hospital Details</b>	Actual Available	Lacuna
	Name of the Hospital : <u>Seven Stars + Ardhant + Bhavani + Centre Point</u>	Available	
	Bed Strength : <u>78</u> <span style="float: right;">+ KIMS</span>		
	Number of beds registered as per BNH act:		
17	<b>Clinical Facilities : Parent / Attached Hospital (Govt./Civil/Private) Must be within 10km. radius of the College</b>		
a.	<b>Total built up area of Hospital (in Sq.Ft.) : .....</b>		
b.	<b>Whether Hospital is registered under any act under Local Authority such as Corporation, Municipality, Gram Panchayat etc.: <u>YES</u></b> (Please attach copy of registration certificate)	Available	
c.	<b>Whether Casualty is available and functional :</b>	Available	
18	<b>Required Beds (UG &amp; PG) Indoor and Outdoor Facility (as per M.S.R.)</b>	Available	
19	<b>Ambulances : Owned, Hired</b>	Owned + Hired	
	Any other		
<ul style="list-style-type: none"> <li>As per Central Council Norms/ University Norms, above Infrastructure must be available at College and all information with photographs must be uploaded on College Website.</li> <li>If Infrastructure is available, then mark "Adequate" &amp; do not attach any documents.</li> <li>In case of "Inadequate", it must be marked as "Inadequate" with documentary evidence.</li> </ul>			

### Infrastructure

College Building: Own / Rented Own

Total built up area available for college building: 44293.5 sq.ft.

intake capacity: 50



Architect

Interior Designer

Planner, Estimator, Valuer

Licensed Surveyor

**BHAUSAHEB MULAK PHYSIOTHERAPY COLLEGE**  
**STATUS OF INFRASTRUCTURE (REQUIRED AND AVAILABLE)**

SR. NO	TEACHING BLOCK	REQUIRED AREA IN SQ. FT FOR 100 INTAKE & PG	AREA AVAILABLE/PROPOSED IN SQ. FT	TOTAL AREA AVAILABLE IN SQ. FT
1	ADMINISTRATIVE OFFICE			
2	DIRECTOR/DEAN/PRINCIPAL/HEAD OFFICE	500	917.18	917.18
	CONFERENCE ROOM	400		
		500	907.55	907.55
3	PROFESSOR'S OFFICE (NEURO PHYSIO)	750	182.92	906.27
	PROFESSOR'S OFFICE (KINESIO)		171.23	
	PROFESSOR'S OFFICE (MSK)		182.92	
	PROFESSOR'S OFFICE (CARDIO)		182.92	
	PROFESSOR'S OFFICE (COMMU.)		186.28	
4	ASSOCIATE PROFESSOR'S OFFICE (ELECTRO)	1000	100	1068.91
	ASSOCIATE PROFESSOR'S OFFICE (KINESIO)		143.91	
	ASSOCIATE PROFESSOR'S OFFICE (MSK)		200	
	ASSOCIATE PROFESSOR'S OFFICE (NEURO PHYSIO)		200	
	ASSOCIATE PROFESSOR'S OFFICE (COMMU.)		225	
	ASSOCIATE PROFESSOR'S OFFICE (CARDIO)		200	
5	ASSISTANT PROFESSOR'S OFFICE (Electrotherapy)	1275	190	1390.23
	ASSISTANT PROFESSOR'S OFFICE (KINESIO)		225	
	ASSISTANT PROFESSOR'S OFFICE (MSK)		246.23	
	ASSISTANT PROFESSOR'S OFFICE (NEURO PHYSIO)		279	
	ASSISTANT PROFESSOR'S OFFICE (CARDIO)		225	
	ASSISTANT PROFESSOR'S OFFICE (COMMU.)		225	
6	OSAC & EXAMINATION ROOM	1200	1567.29	1567.29
7	MINI AUDITORIUM	1600	3180.5	3180.5
8	CLASS ROOMS	6000	1500	6056.62
			1500	
			1556.62	
9	STUDENTS COMMON ROOM (GIRLS)	1200	1500	1297.18
			350.776	
			718.37	
			228.03	
10	STUDENTS COMMON ROOM (BOYS)	600	518.28	746.31
11	LIBRARY WITH READING ROOM & e Library		228.03	
12	HOSTEL FOR GIRLS	1000	2038.12	2038.12
13	HOSTEL FOR BOYS		20563.22	20563.22
14	Electrotherapy & Electrodiagnosis	6000	22179.88	6113.24
	Yoga/ Clinical Skill Lab		1500	
	Kinesiotherapy Lab		1500	
	Exercise Physiology/ Fitness Lab		1556.62	
			1556.62	
15	ANATOMY & PHYSIOLOGY (Shared with Ayurvedic College)	1500	3472.252	3472.252
16	INDOOR-PHYSIOTHERAPY DEPARTMENT (MoU with Attached Hospital)	1200	2208.49	2208.49
17	OUT-DOOR PHYSIOTHERAPY AREAS	6000	7257.36	7257.36
18	Therapeutic Gym	1500	1500	1500
19	RECREATIONAL AREA	1200	1416	1416
20	PG SEMINAR HALL	1000	1000	1000
21	DISCUSSION RM	500	500	500
22	MUSEUM	500	500	500
23	SPORT	250	250	250
	TOTAL AREA EXCLUDING HOSTEL & SHARED AREA(CARPET)	35675	44293.56	

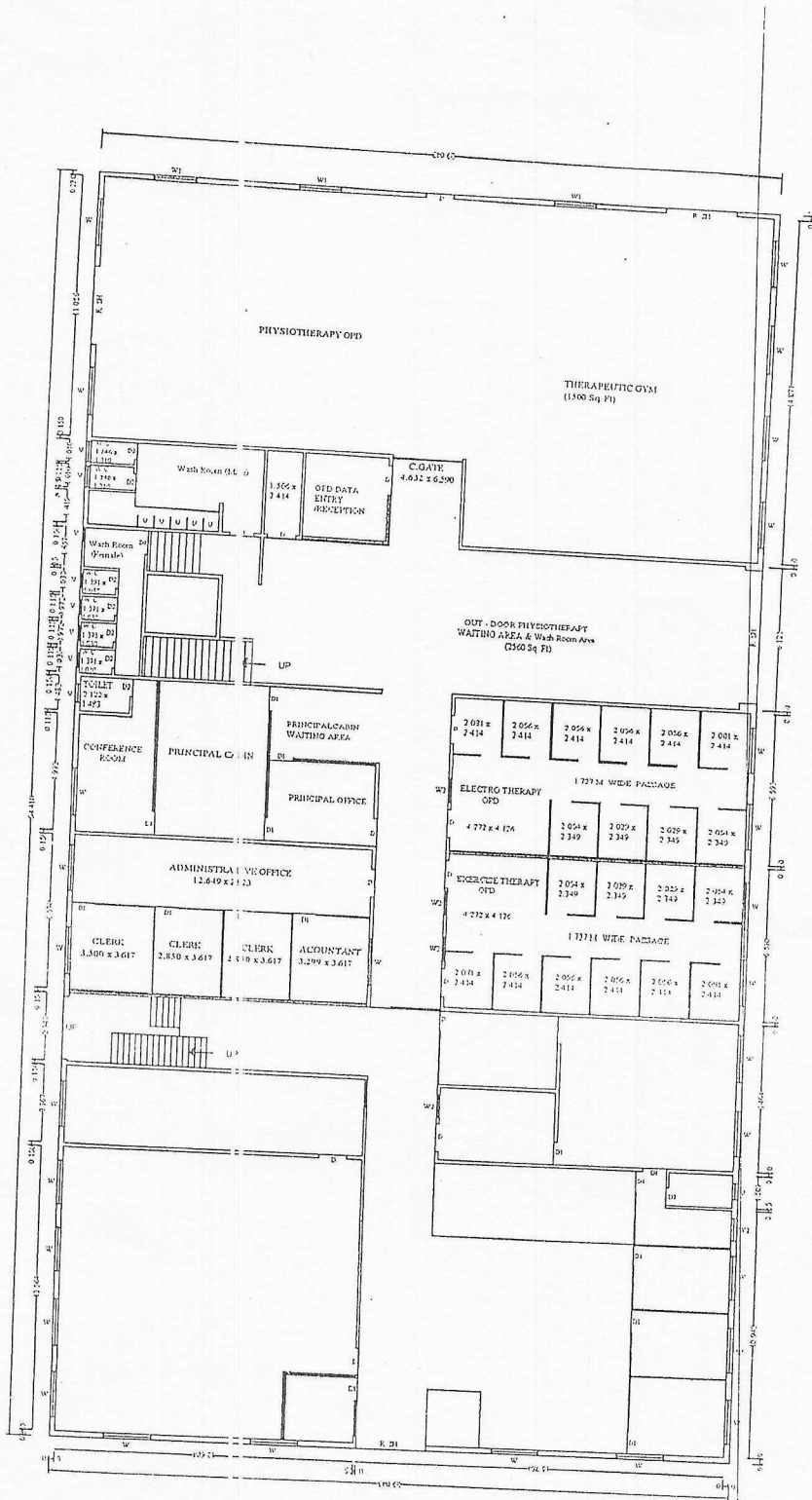
*M. M. M.*

*M. M. M.*  
Principal

Bhauasaheb Mulak Physiotherapy College  
NAGPUR

Principal  
Bhauasaheb Mulak Physiotherapy College.  
Nagpur

*Padole*  
Pooja M. Padole  
ARCHITECT  
CA/2013/58622



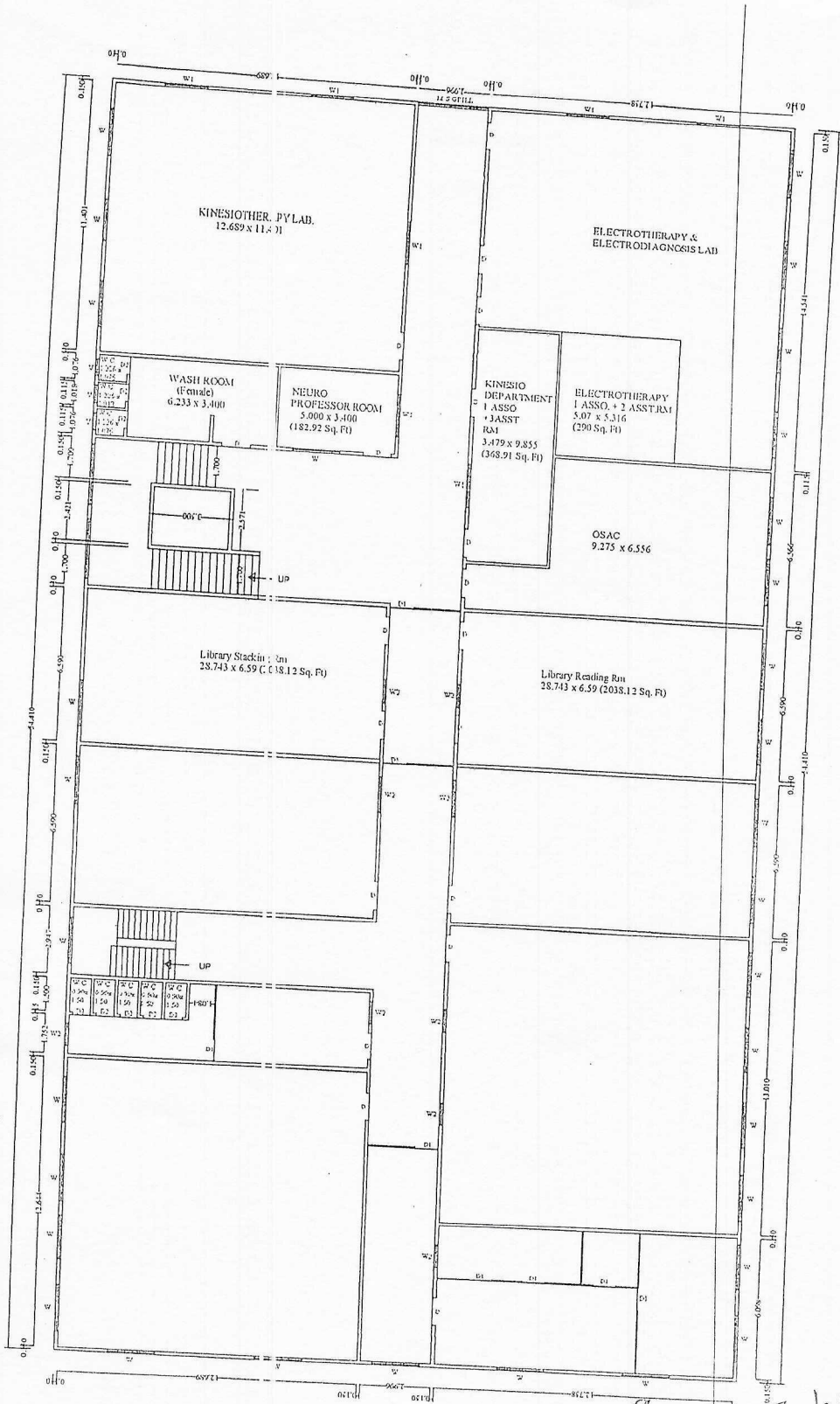
GROUND FLOOR PLAN

BHAUSAHEB MULAK PHYSIOTHERAPY COLLEGE, NAGPUR

*Pradab*  
*Pradab*  
 Ar. Pradab M. Padole  
 Principal  
 Bhausaheb Mulak Physiotherapy College  
 NAGPUR

ARCHITECT  
 CA/2013/158622

*Pradab*  
 Principal  
 Bhausaheb Mulak Physiotherapy College.  
 Nagpur



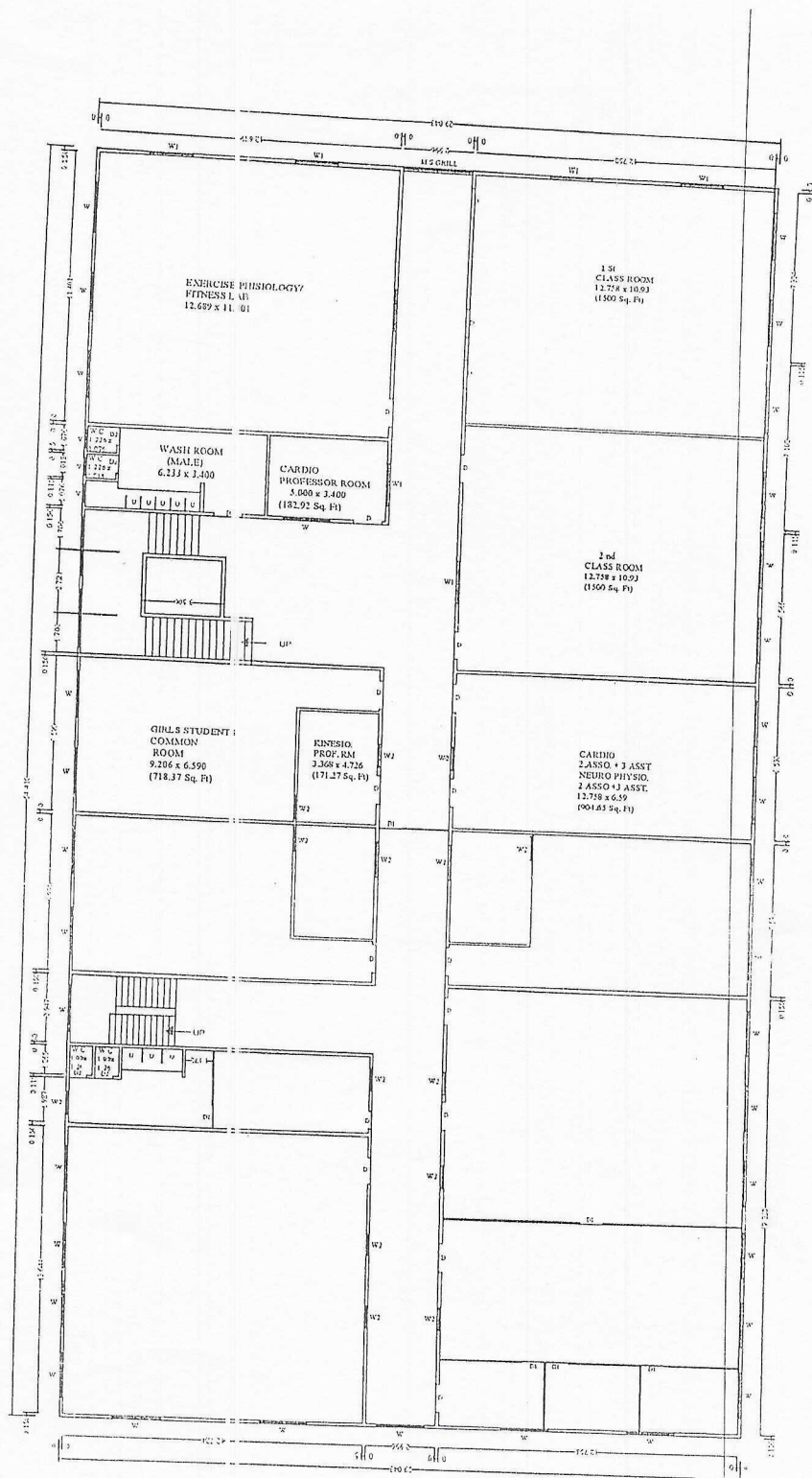
FIRST FLOOR PLAN

BHAUSAHEB MULAK PHYSIOTHERAPY COLLEGE, NAGPUR

*Ar. Pooja Padole*  
**Ar. Pooja Padole**  
 ARCHITECT  
 CA/2013/58633  
 NAGPUR-2600

*[Signature]*  
 Principal  
 Bhausaheb Mulak Physiotherapy College  
 NAGPUR

*[Signature]*  
 Principal  
 Bhausaheb Mulak Physiotherapy College.  
 Nagpur



SECOND FLOOR PLAN  
 BHAUSAHEB MULAK PHYSIOTHERAPY COLLEGE, NAGPUR

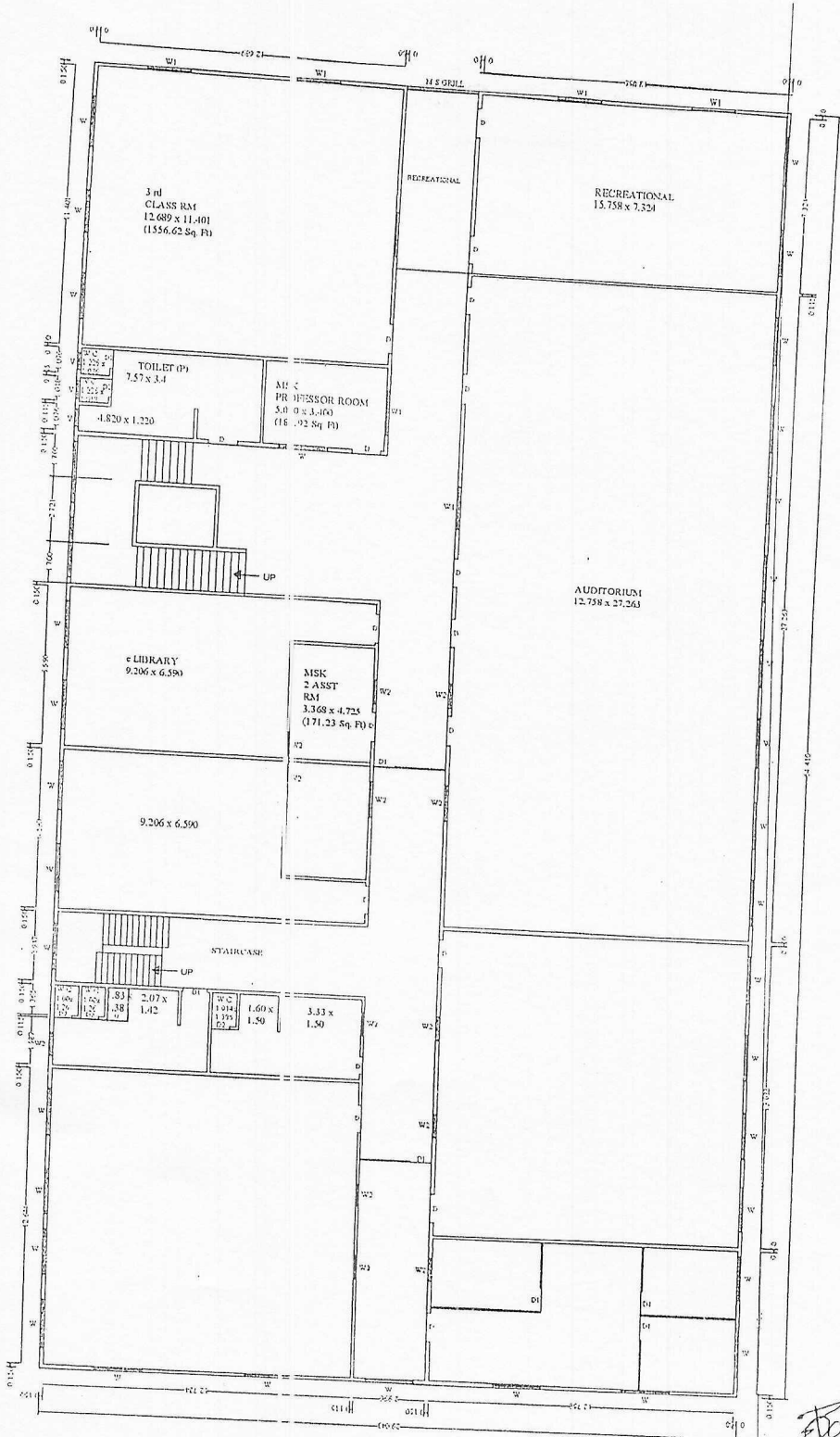
*Padole*  
 A. Pooja M. Padole  
 ARCHITECT

CA/2013/58622  
 N.I.T.L.S. NO. 2600

*Alam*

*Alam*

Principal  
 Bhausaheb Mulak Physiotherapy College.  
 Nagpur



THIRD FLOOR PLAN

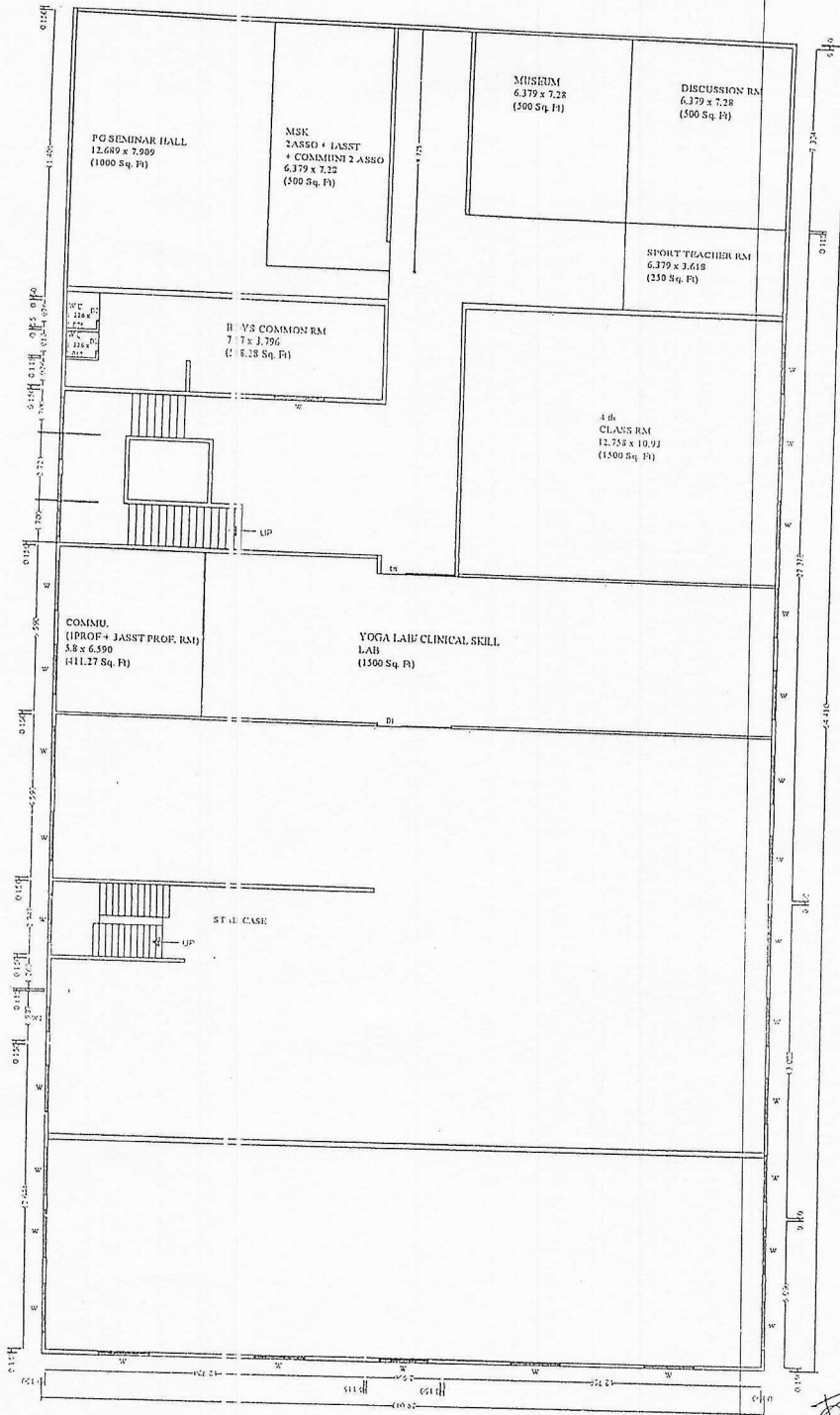
BHAUSAHEB MULAK PHYSIOTHERAPY COLLEGE, NAGPUR

*Padole*  
 Ar. Pooja M. Padole  
 ARCHITECT  
 CA/2013/58622  
 REG. NO. 8600

*Kumar*

*Kumar*

Principal  
 Bhausaheb Mulak Physiotherapy College,  
 Nagpur



FOURTH FLOOR PLAN

BHAUSAHEB MULAK PHYSIOTHERAPY COLLEGE, NAGPUR 441102  
 ARCHITECT  
 N.I.T.L.S. NO. - 2600

*Ar. Pooja M. Padole*

ARCHITECT  
 NAGPUR 441102  
 N.I.T.L.S. NO. - 2600

*Princip*  
*Princip*

Principal  
 Bhausaheb Mulak Physiotherapy College,  
 Nagpur

The below mentioned is Minimum Standard Requirement For UG

Space allotment	10 Intake	30 Intake	31 to 40 Intake	41 to 50 Intake	51 to 60 Intake	61 to 100 Intake	Actual available	Lacuna
Administrative office with storage space	300	300	300	400	400	500	917.18	
Director/dean/principal /H.O.D.'s office	400	400	400	400	400	400	907.55	
Professor's office	NA	300	300	600	600	750	966.27	
Associate Professor's office	100	400	400	600	600	1000	1068.91	
Assistant Professor's office	225	525	525	600	600	1275	1390.23	
Conference room	300	300	300	300	500	500	500	
Mini Auditorium	1500	1500	1500	1500	1500	1600	3180.5	
Anatomy	1200	1200	1200	1200	1500	1500	2787	
Physiology	1200	1200	1200	1200	1500	1500	2405	
Electrotherapy & Electrodiagnosis	1200	1200	1200	1200	1500	1500	1500	
Kinesiology, Kinesiotherapy & Movement Sciences	1200	1200	1200	1200	1500	1500	1556.62	
Clinical Skill Lab / Yoga Lab	1200	1200	1200	1200	1500	1500	1500	
Therapeutic Gym	1200	1200	1200	1200	1500	1500	1500	
Indoor-physiotherapy department	1200	1200	1200	1200	1200	1200	2208.49	
Out-door physiotherapy department	5000	5000	5000	5000	6000	6000	7257.36	
Recreational Area	600	600	1000	1200	1200	1200	1416	
Library Space	300	600	900	1000	1200	2000	2038.12	
Class Rooms (15 Sq Ft per student 1 class room for each year)	150 / Classroom	450 / Classroom	600 / Classroom	750 / Classroom	900 / Classroom	1500 / Classroom	6056.62	
	600	1800	2400	3000	3600	6000		
Student Girls Common Rooms	600	500	800	1000	1000	1200	1297.18	
Student Boys Common Rooms	250	250	250	400	400	600	746.31	
Final Year Departmental Area	1200	1200	1200	1500	1500	2000	?	
<b>Total Available</b>	<b>9775</b>	<b>22075</b>	<b>23675</b>	<b>25900</b>	<b>29700</b>	<b>35225</b>		

\* In absence of attached Medical College:  
Library space should be 2000 Sq.Ft

*[Signature]*

Dean/ Principal Stamp & Signature

Principal

Bhauasaheb Mulak Physiotherapy College,  
Nagpur

Verified by The LIC Committee Members